

Stay connected 24/7.  
Monitor, data log  
and remotely view  
pH, conductivity and  
temperature readings.

**1 Bluelab  
Connect Stick  
required to  
data log  
(sold separately)**

*Only one connect  
stick required for  
multiple devices*

# Contents

	page		page
Features	3	pH calibration	8
Bluelab Guardian Monitor Connect	3	Placement of probes	10
What's in the box?	4	Set alarms (optional)	11
IMPORTANT - Bluelab pH Probe care	5	Cleaning the conductivity/temperature probe	13
Mounting the Guardian Monitor Connect	6	Cleaning the pH probe	14
Install correct plug adaptor	6	Hydrating the pH probe	14
Connect power adaptor and Bluelab pH Probe	6	Troubleshooting guide	15
Power up	7	Technical specifications	16
Select the desired conductivity unit	7	Associated products	17
Select the desired temperature unit	7	Bluelab limited warranty	18
Select the desired brightness level of the LED displays	7	Contact details	19



## Congratulations on purchasing the Guardian Monitor Connect

The Guardian Monitor Connect is not only a consistent indicator of the desired levels of pH, conductivity and temperature of your nutrient solution, it also data logs these critical parameters to your computer for you.



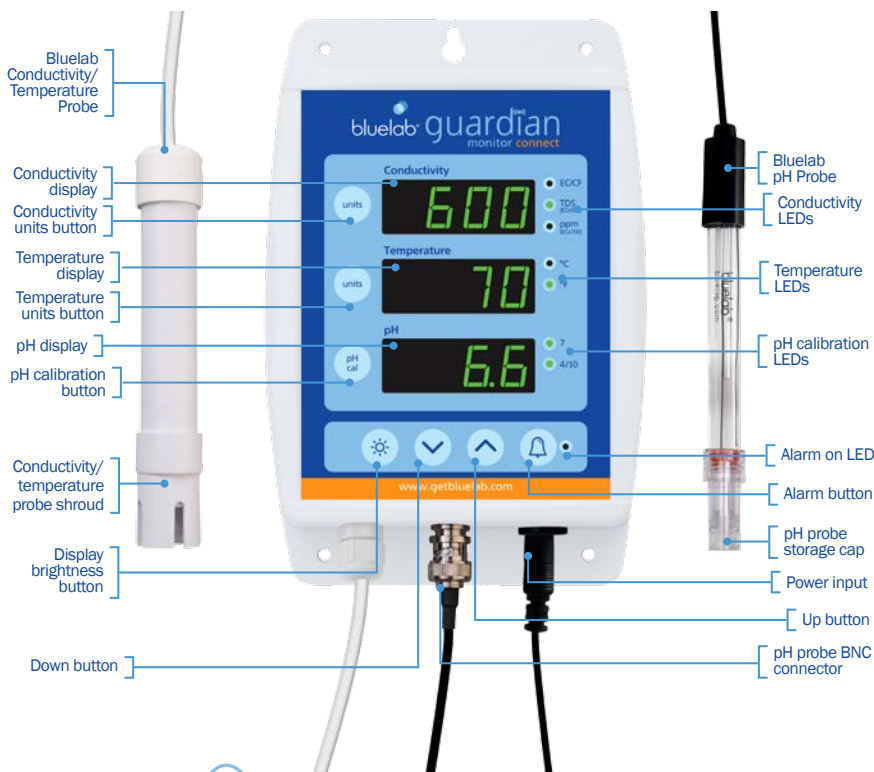
## Features

Data logging capability (ONE BlueLab Connect Stick is required, sold separately)	View data and current status remotely via Google Docs (A computer with permanent internet access is required)
Compatible with BlueLab Connect Stick and BlueLab Connect Range Extender	Free BlueLab Connect Software available online
'Plant Safe' green LED display	Visual alarm for both high and low settings
Large easy to read displays	Water resistant design
No calibration required for conductivity or temperature	Greater tolerance to RF/electronic interference provided
Selectable units for conductivity and temperature	International power supply
Simple push button pH calibration	Adjustable display brightness



**What is Plant Safe?** Green LED's are safe for continued growth during a plant's fruiting stage when hours of darkness are required.

## Guardian Monitor Connect



**Keep your pH probe tip wet**  
at all times to avoid permanent damage

## 1.0 What's in the box?

Please verify the box contents from the information below.



- |   |   |
|---|---|
| 1 Guardian Monitor Connect                          | 8 UK plug adaptor   |
| 2 Bluelab pH Probe with storage cap                 | 9 European plug adaptor   |
| 3 Bluelab Conductivity/Temperature Probe            | 10 4 x mounting fasteners   |
| 4 Bluelab standard pH Probe holder with suction cup | 11 2 x cable ties   |
| 5 5V DC power supply                                | 12 pH 7.0, pH 4.0 and EC 2.77 single use calibration solution sachets |
| 6 North American plug adaptor                       | 13 Guardian Monitor Connect Getting Started Guide                     |
| 7 NZ / Australian plug adaptor                      |   |





## 2.0 IMPORTANT - BlueLab pH Probe care

The BlueLab pH Probe is the only part of the Guardian Monitor Connect that should ever require replacing. pH probes DO NOT last forever. They age through normal use and will eventually fail. The life time of a pH probe depends on the environment it is used in and the way that it is treated. To receive a long life from your pH probe, please ensure you follow the guide below.

pH probes contain glass and are therefore FRAGILE. With good care, they will give a long service life.

### BlueLab pH Probe



**DO NOT** let the pH probe tip dry. IF IT DRIES IT DIES!

**DO NOT** bend the probe; this will break its internal glass tube.

**DO NOT** knock the probe; this will break its internal glass tube or external glass bulb.

**DO NOT** plunge a cold pH probe into a hot liquid - sudden temperature changes can crack the glass and permanently damage the probe.

**DO NOT** immerse in oils, proteins or suspended solids that will leave a coating on the glass bulb.

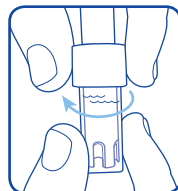
**DO NOT** 'kink' or bend the lead sharply.

**DO NOT** attempt to lengthen the lead on the pH probe.

**DO NOT** wet the BNC connector at the end of the lead.

### Always remove pH probe storage cap before use

1. Grip the top of the cap and gently twist the base one rotation clockwise to loosen slightly.
2. Next slowly slide the cap off the pH probe. DO NOT completely remove the base of the cap from the top of the cap.
3. Store the storage cap in a safe place.



Removing pH probe storage cap

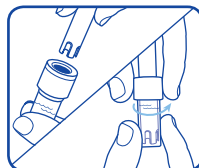
### Storing the pH probe

When storing the pH probe, the pH probe tip must be kept moist.

To prepare the pH probe for storage, add enough BlueLab pH Probe KCl Storage Solution to the storage cap so the probe tip is covered. Then replace the cap and store in a secure place. DO NOT use RO (Reverse Osmosis), Distilled or De-ionized water. Pure water changes the chemistry in the reference, causing the probe to die.

### If the pH probe has been accidentally allowed to dry out;

The pH probe must be 'hydrated' for 24 hours in KCl storage solution (never use RO, Distilled or De-ionized water). Following this; carry out a calibration to check if the probe has already suffered permanent damage.



Ensure probe tip is covered by the KCl storage solution in the cap



# Please follow these steps before mounting your Guardian Monitor Connect

- A Note the 4 character KEY CODE on the rear of your Guardian Monitor Connect. key code: abcd
- B Follow the getting started instructions supplied with the Bluelab Connect Stick to install the Bluelab Connect Stick, Bluelab Connect Software and add your Guardian Monitor Connect to your computer.
- C Follow steps 3.0 to 12.0 to mount and operate your Guardian Monitor Connect.

## 3.0 Mounting the Bluelab Guardian Monitor Connect - if wall mounting

1 Select a suitable location that is less than 2 meters from your reservoir, and less than 1.5 meters from an electrical mains outlet. *NOTE: Avoid placing the Guardian Monitor Connect where it can be damaged by direct sunlight, water or nutrient salts.*

### 2 Option 1

- a) Install two fasteners (top and bottom) to the wall 172mm / 6.¾" apart.
- b) Slide the Guardian Monitor Connect onto the fasteners using the keyholes.

### Option 2

- a) Fix the four fasteners through each mounting hole in each corner of the case.

### Option 1

Mounting keyholes top and bottom



### Option 2

Mounting holes top and bottom

## 3.1 Mounting the Bluelab Guardian Monitor - if mounting on a support or bar

1 Select a suitable location that is less than 2 meters from your reservoir, and less than 1.5 meters from an electrical mains outlet. *NOTE: Avoid placing the Guardian Monitor Connect where it can be damaged by direct sunlight, water or nutrient salts.*

2 Fix each of the cable ties provided through the small mounting holes in the top of the case and wrap around the support or bar and secure.



Cable ties fixed through small mounting holes around a support or bar.

## 4.0 Install correct plug adaptor

- 1 Select the appropriate mains plug adaptor for your country.
- 2 Connect the plug adaptor to the power supply.

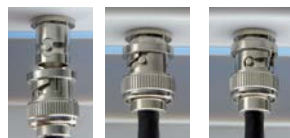


## 5.0 Connect power adaptor and Bluelab pH Probe

1 Connect the power adaptor into the base of the Guardian Monitor Connect where 'Power Input' is labelled. Plug the adaptor into mains power supply.



2 Connect the pH probe to the Guardian Monitor Connect by lining up the lugs of the BNC fittings. Fasten securely by pushing the pH probe connector on and twisting one quarter turn.



Inserting

Twisting

Attached



## 6.0 Power up

- 1 Switch on power adaptor at the mains.
- 2 When power is applied the Guardian Monitor Connect will complete a display test sequence.

## 7.0 Select the desired conductivity unit

Conductivity readings can be displayed in EC, CF, TDS or ppm 700. The selected unit is indicated by one of the 3 LEDs next to the conductivity window. When the EC/CF LED is on, the Guardian Monitor Connect is displaying conductivity in units of EC or CF. If there is a decimal point present in the conductivity display, the units are EC. If there is no decimal point the units are CF.

- 1 Press and hold the conductivity unit button and after 3 seconds it will change to the next unit indicated by the glowing LED.
- 2 Release.
- 3 Repeat steps 1 and 2 until the desired unit is selected.



## 8.0 Select the desired temperature unit

Temperature readings can be displayed in either degrees celsius (°C) or degrees fahrenheit (°F). The selected unit is indicated by one of the two LEDs next to the temperature window.

- 1 Press and hold the temperature unit button and after 3 seconds it will change to the next unit indicated by the glowing LED.
- 2 Release.
- 3 Repeat steps 1 and 2 until the desired unit is selected.

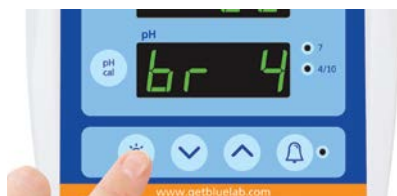


## 9.0 Select the desired brightness level of the LED displays

These can be adjusted to best suit the light levels of the environment. There are 8 levels of 'brightness' that can be selected.

- 1 Press and hold the brightness button and at the same time press either the up or down buttons to change the brightness. Brightness levels are shown in the pH window.

1 = least bright, 8 = brightest





## 10.0 Calibration

pH calibration is required before first use to ensure that the first reading is accurate.

- *The BlueLab Conductivity/Temperature Probe DOES NOT require calibration.*
- *The pH of the Guardian Monitor Connect DOES require calibration.*

### For accurate pH readings the pH probe is cleaned and recalibrated when:

- The reading is different to what you were expecting.
- The Guardian Monitor Connect is reset to factory default.
- The pH probe is replaced with a new one.
- It has been a month since the last successful calibration and the calibration indicator lights are flashing.

*When calibrating the pH after first use the pH probe needs to be cleaned. See pH probe cleaning in section 14.0.*

### For best pH calibration

**pH reading accuracy is dependant on the accuracy and age of the calibration solutions used, and use and cleanliness of the pH probe tip.**

- Ensure the pH probe has been cleaned and rinse the pH probe with clean water between calibration solutions to reduce contamination of the pH solutions.
- Only fresh uncontaminated solutions should be used.
- Calibrate the pH at the same temperature as the solution to be measured.
- ALWAYS calibrate the pH probe with pH 7.0 then pH 4.0 or pH 10.0.

*NOTE: The conductivity/temperature probe does not need to be calibrated, but must be cleaned to remove any build up of nutrient salts. See Section 13.0.*

### The pH calibration involves cleaning the pH probe tip and then calibrating in TWO SOLUTIONS.

If a reading below pH 7.0 is expected, use pH 7.0 and pH 4.0 calibration solutions.  
If a reading above pH 7.0 is expected, use pH 7.0 and pH 10.0 calibration solutions.  
Follow the steps on the following page for Guardian Monitor Connect pH calibration.

### Storage and use of calibration solutions

- Always place the lid back onto the bottle after use or evaporation will occur rendering the solution useless.
- DO NOT measure directly into the bottle. Tip a small amount into a clean container and discard after use.
- Never add water to solutions.
- Store in a cool place.

*pH reading accuracy is dependant on the accuracy and age of the calibration solutions used, and use and cleanliness of the pH probe tip.*





## 10.0 pH calibration cont.

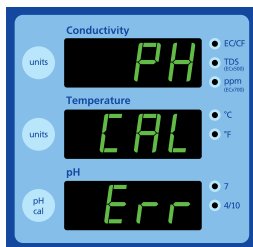
### To calibrate the pH

#### 1 Clean pH probe tip.

See section 14.0 (the pH probe does not require cleaning before the first use).

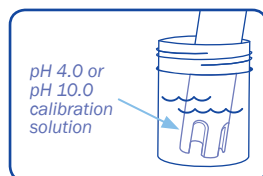
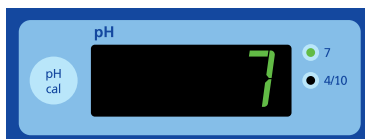
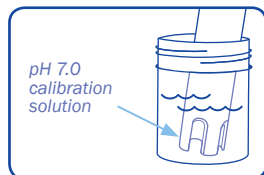
#### 2 pH 7.0 calibration

- Prepare a small amount of pH 7.0 calibration solution in a container.
- Ensure the Guardian Monitor Connect is plugged in and in operation mode.
- Rinse the pH probe tip in fresh water, shake off excess water and place in the pH 7.0 calibration solution. Wait at least one minute for reading to stabilize.
- Press and hold the pH cal button for a few seconds until 'PH' and 'CAL' appear in the windows, then release the pH cal button. The '7' LED will glow green. All three windows will return to monitoring mode with all current values being displayed.
- If 'Err' is displayed see the troubleshooting guide on section 16.0.



#### 3 pH 4.0/10.0 calibration

- Prepare a small amount of pH 4.0 or pH 10.0 calibration solution in a container.
- Rinse the pH probe tip in fresh water, shake off excess water and place in either pH 4.0 or pH 10.0 calibration solution. Wait at least one minute for reading to stabilize.
- Press and hold the pH cal button for a few seconds until 'PH' and 'CAL' appear in the windows, then release the pH cal button. The 4/10 LED will glow green. All three windows will return to monitoring mode with all current values being displayed.
- If 'Err' is displayed see the troubleshooting guide on section 16.0.
- The Guardian Monitor Connect is now calibrated and ready for use.



Successful pH 7 and pH 4 calibration



## 10.0 pH calibration cont.

### pH calibration LEDs

The LEDs next to the pH window will let you know the status of calibration. See the table below.



NOTE: The pH probe and hence calibration will eventually fail due to;

- Contamination and age of pH probe.
- pH probe used to measure solutions at temperatures above 50 °C (122 °F) or below 0 °C (32 °F).
- pH probe exposed to aggressive chemicals.
- Internal damage to the pH probe from rough treatment.
- Damage to the cable of the pH probe from rough treatment.
- pH probe repeatedly drying out.
- Moisture getting inside the BNC connector on the pH probe cable.

### pH LEDs

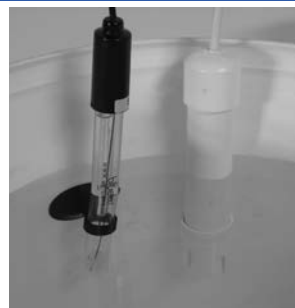
<ul style="list-style-type: none"> <li>● 7</li> <li>● 4/10</li> </ul>	Using factory default calibration values. Both LEDs off. Readings may be unreliable.
<ul style="list-style-type: none"> <li>● 7</li> <li>● 4/10</li> </ul>	pH 7 calibrated OK. Using factory default for pH 4/10. pH 7 calibrated OK. Using factory default for pH 4/10. Readings may be unreliable.
<ul style="list-style-type: none"> <li>● 7</li> <li>● 4/10</li> </ul>	pH 7 and pH 4 or pH 10 calibrated OK.
<ul style="list-style-type: none"> <li>● 7</li> <li>● 4/10</li> </ul>	30 days passed since last full calibration - calibration due.
<ul style="list-style-type: none"> <li>● 7</li> <li>● 4/10</li> </ul>	If 7 is flashing and 4/10 is off, calibration is also required as 4/10 was never calibrated.

## 11.0 Placement of probes

Both the *Bluelab pH Probe* and *Bluelab Conductivity/Temperature Probe* require submersion in the liquid for a measurement to occur.

- *Do not pour concentrated nutrient solution or pH adjuster directly onto probes when in the reservoir, as very strong acid may damage the probes or your alarms (if set) may trigger.*

- 1 Fit the (optional) pH probe holder to the stem of the pH probe using a gentle twisting motion.
- 2 Place the pH probe into the reservoir and push the suction cup onto the side of the reservoir but far enough down so the pH probe tip is in the solution. The holder prevents damage to the pH probe from banging onto the side of the reservoir with movement of the solution.
- 3 Place the conductivity/temperature probe into the reservoir selected.



## 12.0 Set alarms (optional)

The alarm function warns you when the solution deviates from the desired levels you have chosen for each measurement.

When an alarm condition is present, the display of the affected measurement will flash.

If the measurement changes back to within the limits you have chosen, the flashing will stop.

Even though the resolution of the Guardian is 10 ppm / TDS, the alarms will set only in 50 ppm and 70 ppm increments.

There are two ways to set the alarm, 'quick-set' or 'detailed-set'.



### Alarm 'quick-set'

This allows you to quickly set the 'alarm HIGH' and 'alarm LOW' values for all of the three measurements. The table below shows the values that are pre-set when 'quick-set' is used.

NOTE: Before you use the quick-set function, the solution in the tank/reservoir must be adjusted to the desired/actual levels for all three parameters and the levels displayed in each of the windows. If this is not done you should use the alarm 'detailed-set'.

	Alarm low	Alarm high
Conductivity	actual value - 2 CF / 0.2 EC 100 TDS 140 ppm	actual value + 2 CF / 0.2 EC 100 TDS 140 ppm
Temperature	actual value - 3 °C / 5 °F	actual value + 3 °C / 5 °F
pH	actual value - 0.5 pH	actual value + 0.5 pH

### To activate the 'quick-set' alarm;

- 1 Press and hold the alarm button until 'AL H' is displayed in all three windows. Release the alarm button.
- 2 Press the brightness button once.
- 3 All three windows will display Auto for 1 second and then SAVE will be displayed in the conductivity window. The alarms are now auto set and the alarm mode will be turned on. The alarm LED will glow.





## 12.0 Set alarms (optional) cont.

### Turn alarm ON/OFF

Press the **alarm** button to change between alarm ON and alarm OFF. When the alarm is ON the alarm LED will glow.

NOTE: If you press and hold the alarm button you will enter the alarm setting mode.



### Alarm 'detailed-set'

#### To set the detailed 'alarm HIGH' and 'alarm LOW' values;

- 1 Press and hold the alarm button until 'AL H' is displayed in all three windows.
- 2 Release the button and the current 'alarm HIGH' values are displayed in each window.
- 3 To set conductivity alarm high value, press the conductivity unit button then the up and down buttons to change its value.
- 4 To set temperature alarm high value, press the temperature unit button then the up and down buttons to change its value.
- 5 To set pH alarm high value, press the pH unit button then the up and down buttons to change its value.
- 6 Press the alarm button to now select the low alarm values.
- 7 Set the low alarm values the same way as you did the high alarms.
- 8 Press the alarm button. SAVE is briefly displayed in the conductivity window and the Guardian Monitor Connect will return to its normal monitoring mode.

#### NOTES:

To review current alarm settings without changing the values, repeatedly press the alarm button to step through the high and low alarms.

If you want to exit the alarm settings mode without keeping any changes you have made DO NOT press any keys. The Guardian Monitor Connect will 'timeout' and return to its normal monitoring mode without saving any changes after 1 minute.

The software will prevent you from setting low alarm values higher than the high alarm values.



## 13.0 Cleaning the conductivity/temperature probe

### Cleaning the Bluelab Conductivity/Temperature Probe

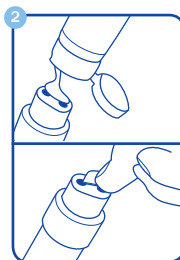
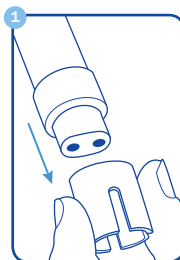
*Cleaning the conductivity/temperature probe periodically ensures accurate readings.*

The conductivity/temperature probe is cleaned using the Bluelab Conductivity Probe Cleaner, or "Jif" a trade name for a liquid scourer cream used in home bathrooms and kitchens. Similar products are called "Liquid Vim", "Soft Scrub", "Cif cream", or "Viss". Never use scented varieties as they contain oils that contaminate the conductivity/temperature probe.

Follow the steps below to clean the conductivity/temperature probe.

#### 1 Remove shroud.

Warm the shroud in your hand for a few seconds to help with removal. Hold the body and pull the shroud off.



#### 2 Clean the conductivity probe face.

Place one or two drops of Bluelab Conductivity Probe Cleaner onto the probe face and rub with the Bluelab Chamois or your finger firmly and vigorously.

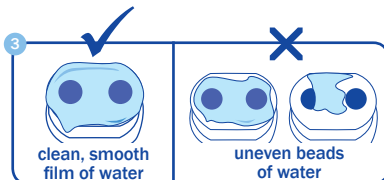
#### 3 Rinse the conductivity probe face.

Rinse off all traces of cleaner under running tap water while scrubbing the probe face with the other side of the Bluelab Chamois or the same finger.



#### 4 Check that the water forms a smooth film on the probe face. Ensure you have a clean, smooth film without any beads of water.

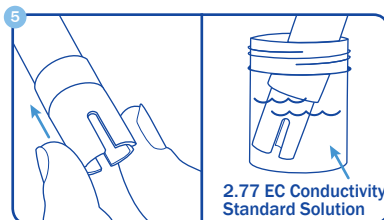
If you have beads of water, repeat steps 2 and 3.



#### 5 Refit the shroud and test in 2.77 EC Conductivity Standard Solution to ensure adequate cleaning.

Place the probe tip into the solution, wait for the reading to stabilize to a constant value. This can take a few minutes while the probe adjusts to the temperature of the solution.

Repeat the cleaning process if the reading given is not within 0.1 EC, 1 CF, 50 ppm or 70 ppm of the values in the table below.



### Testing the Bluelab Conductivity/Temperature Probe

*The conductivity/temperature probe is tested in either 2.77EC/27.7CF/1385 ppm or 1940 ppm solution depending on the unit of conductivity chosen.*

Use the standard solutions in the table to the right. Bluelab solutions are recommended.

Unit chosen	EC	CF	ppm 500	ppm 700
Solution required	2.77	27.7	1385	1940

NOTE: The shroud **MUST** be left on the probe when taking readings.



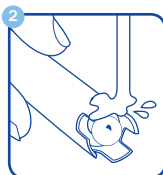
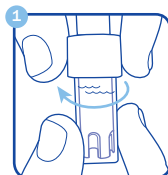
## 14.0 Cleaning the Bluelab pH Probe

To ensure accurate readings the pH probe tip needs to be rinsed in water after each use and cleaned prior to calibration using the following instructions.

The storage cap must always be put back on after cleaning. Always ensure it contains enough Bluelab pH Probe KCl Storage Solution to cover the probe tip.

### 1 Remove storage cap from pH probe.

Hold the top of the storage cap, twist the cap to loosen then remove.

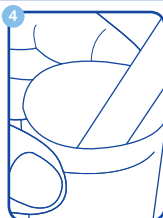


### 2 Rinse pH probe tip under fresh tap water.

Never use RO (Reverse Osmosis), Distilled or De-ionized water.

### 3 Fill a small plastic container with clean tap water.

Add a small amount of Bluelab pH Probe Cleaner or mild detergent (dishwashing liquid).

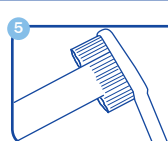


### 4 Gently stir the probe tip in the mixture.

Ensure that you do not 'knock' the soil pH probe on the side of the container as this may cause damage to the probe.

### 5 If the probe tip requires removal of heavy contamination:

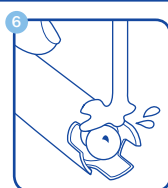
Gently brush around the glassware with a few drops of Bluelab pH Probe Cleaner or mild detergent (dishwashing liquid) and a soft toothbrush.



### 6 Rinse well under fresh running tap water to remove all traces of the detergent mixture.

### 7 Calibrate pH probe after cleaning, see section 10.0

After calibration, store pH probe in the storage cap, ensuring there is enough KCl Storage Solution to cover the probe tip.



## 15.0 Hydrating the pH probe

Hydrate the pH probe in Bluelab pH Probe KCl Storage Solution when:

- the probe tip has not always been stored in KCl storage solution, to improve the reading response speed.
- the probe tip has been accidentally allowed to dry out.

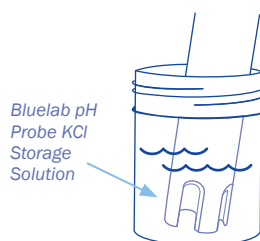
Never use RO (Reverse Osmosis), De-ionized or Distilled water. Pure water changes the chemistry in the reference, causing the probe to die.

### 1 Loosen, then remove the storage cap. Place the pH probe upright in a plastic container.

### 2 Clean the pH probe tip. Ensure the probe tip is cleaned before hydrating. See section 14.0 for instructions.

### 3 Add enough Bluelab pH Probe KCl Storage Solution to a plastic container to submerge the pH probe tip.

### 4 Leave to soak for at least 24 hours. After hydration, always calibrate the pH probe to ensure accuracy, see section 10.0.





## 16.0 Troubleshooting guide

Trouble	Reason	Correction
<i>Nutrient reading low</i>	Contaminated conductivity/temperature probe.	Clean conductivity/temperature probe (see section 13.0) .
	Temperature of conductivity/temperature probe and solution different.	Wait 5-10 minutes for conductivity/temperature probe to reach solution temperature.
<i>Temperature reading inaccurate</i>	Temperature of conductivity/temperature probe different to solution temperature.	Wait 5-10 minutes for conductivity/temperature probe to reach solution temperature.
<i>pH reading inaccurate</i>	Contaminated pH probe / glassware not clean.	Clean pH probe (see Section 14.0); then calibrate (see Section 10.0).
	Using factory default calibration.	Calibrate pH probe (see section 10.0).
	Calibration old.	Calibrate pH probe (see section 10.0).
	Broken glass bulb, tube or connector. pH probe damaged or old.	Check pH probe for damage. Replace pH probe.
<i>Display shows 'Err' during calibration</i>	An attempt was made to calibrate with pH 4.0 or pH 10.0 calibration solution more than one hour after calibration with the pH7.0 solution.	Calibrate to pH 7.0 again then do pH 4.0 / pH 10.0 calibration within one hour.
	Old or contaminated solutions used for calibration.	Use fresh calibration solutions.
	Dirty or contaminated pH probe.	Clean pH probe (see section 14.0).
	pH probe tip been allowed to dry. pH probe damaged or old.	Hydrate pH probe (see section 15.0). Replace pH probe.
<i>No display</i>	Mains not switched on.	Switch mains power on.
	Power adaptor not plugged into the Guardian Monitor Connect.	Plug power adaptor into the base of the Guardian Monitor Connect labeled 'Power Input'.
<i>pH displays 'or' pH displays 'ur'</i>	Over range pH. Under range pH.	Solution > 14.0 pH. Solution < 0.0 pH. Check pH probe connection. pH probe could be faulty. Guardian Monitor Connect could be wet inside.
<i>temp displays 'or' temp displays 'ur'</i>	Over range temperature. Under range temperature.	Solution >51 °C / 122 °F. Solution <0 °C / 32 °F. Conductivity/temperature probe or Guardian Monitor Connect faulty.
<i>conductivity displays 'or'</i>	Over range conductivity/nutrient.	Over range conductivity >9.9 EC, 99 CF, 1990 ppm. Conductivity/temperature probe or Guardian Monitor Connect faulty.
<i>A display shows ----</i>	EC and pH cannot be determined as temperature range is over/under. (see technical specification range section 17.0).	Test pH probe in calibration solutions and conductivity/temperature probe in a known conductivity standard solution to eliminate these as a cause of this problem. Check solution tank/ reservoir for problems.
<i>Device doesn't add to Connect Software</i>	Device authentication code incorrect	Enter correct 4 character key code on rear of product into software.
<i>Device doesn't add to Connect Software</i>	Weak signal and/or device is outside connect stick range	Move device closer to stick. Also refer to positioning your devices document on <a href="http://www.getbluelab.com">www.getbluelab.com</a>
<i>Device doesn't reconnect when I move it to its location</i>	Device outside connect stick range	Move device closer to stick. Also refer to positioning your devices below
<i>Device loses connection when it's signal strength is good</i>	Device may be connected through another device, if the closest device drops out all connected devices also drop out	Increase the signal strength of the device connected to the stick

## 17.0 Technical specifications

Specifications	pH	Conductivity	Temperature
<b>Measurement Range</b>	0.0 – 14.0 pH	0 – 5.0 EC, 0 – 50 CF, 0 – 2500 TDS (ECx500), 0 – 3500 ppm (ECx700)	0 – 50 °C 32 – 122 °F
<b>Resolution</b>	0.1 pH	0.1 EC, 1 CF, 10 TDS, 10 ppm	1 °C 1 °F
<b>Accuracy at 25°C/77°F</b>	±0.1 pH	±0.1 EC, ±1 CF ±50 TDS, ±70 ppm	±1 °C ±2 °F
<b>Calibration</b>	Two point (pH 7.0 and pH 4.0 or pH 10.0)	Not required (factory calibrated)	Not required (factory calibrated)
<b>Automatic Temperature Compensation</b>	Yes (if conductivity/temperature probe is in same solution as pH probe)	Yes	-
<b>Operating Environment</b>	0 - 50 °C / 32 - 122 °F		
<b>Power Source</b>	Input: 100-240 Vac, 50-60 Hz, 5 VA, 4 interchangeable plug types (USA, Euro, UK, NZ/AUS) Output: 5VDC 1Amp		
<b>Signal Range</b>	Indoor / Urban: 66 feet / 20 meters Outdoor / RF line-of-sight: 164 feet / 50 meters		
<b>Frequency Band</b>	2.4 GHz ISM		
<b>System Requirements</b>	Microsoft Windows XP or greater for Bluelab Connect Software. Internet connection for remote access & data-logging to the cloud		
<b>Certs</b>	CE, FCC, IC. Contains Model XBEE2 Radio, IC: 4214A-XBEE2, FCC ID: OUR-XBEE2		
<b>User Manual Languages Available</b>	English		







## Bluelab Connect Stick

The Bluelab Connect Stick receives wireless data from one or more Bluelab connect devices. Your data can then be logged to your local computer and/or to the cloud.

One Connect Stick will receive data from multiple Bluelab Connect devices.

You can add other Bluelab Connect devices to your Connect Software at the click of a button.



## Bluelab Connect Range Extender

A Bluelab Connect Range Extender boosts the data signal strength.

Extend the wireless range by positioning a range extender between your Bluelab Connect devices and your connect stick.

Using the Bluelab Connect Range Extender requires you to already have a connect stick and one or more Bluelab Connect enabled devices.



## Bluelab pH Probe replacement

The Bluelab pH Probe is the only part of the Bluelab pH Meter that requires replacing.

pH probes do not last forever. They age through normal use and will eventually fail.

To ensure you receive a long life from your pH probe, please read the instructions provided with it.

When the time comes to replace your Bluelab pH Probe all you have to do is order a replacement from your supplier!

High Pressure pH Probe - used with In-Line



## Bluelab Probe Care Kit - pH and Conductivity

The instrument is only as accurate as the probe is clean!

Probe cleaning is one of the most important parts of owning and operating any Bluelab meter, monitor or controller.

If the probe is contaminated (dirty) it affects the accuracy of the reading displayed.

The kit contains instructions and all the tools you need to clean the Guardian Monitor Connect probes.



## Bluelab pH Probe KCl Storage Solution

The perfect solution to store and hydrate your Bluelab pH products.

Bluelab pH Probe KCl Storage Solution is designed to increase response time and maximize the life of Bluelab pH pens and pH probes.

For best results, use the KCl solution to store the pH pen/probe after use and hydrate monthly. Instructions are on the label of the bottle.



# Bluelab® limited warranty

Bluelab® Corporation Limited (Bluelab) provides a warranty on its products (Bluelab® Guardian Monitor Connect™) under the following terms and conditions:



## How Long Does Coverage Last?

Bluelab® warrants the Bluelab® Guardian Monitor Connect™ (Product) for a period of 24-months from date of purchase by original purchaser or consumer. Proof of purchase, to Bluelab's sole satisfaction, is required for the warranty to be effective (store sales receipt for Product showing model number, payment and date of purchase). This warranty is non-transferable and terminates if the original purchaser/consumer sells or transfers the Product a third party.

## What is Covered?

Bluelab® warrants the Product against defects in material and workmanship when used in a normal manner, in accordance with Bluelab® instruction manuals. If Bluelab® is provided with valid proof of purchase (as defined above) and determines the Product is defective, Bluelab® may, in its sole discretion either (a) repair the Product with new or refurbished parts, or (b) replace the Product with a new or refurbished Product.

Any part or Product that is replaced by Bluelab® shall become its property. Further, if a replacement part or Product is no longer available or is no longer being manufactured, Bluelab® may at its sole discretion replace it with a functionally-equivalent replacement part or product, as an accommodation in full satisfaction of the warranty.

## What is NOT covered?

This warranty does not apply to equipment, component or part that was not manufactured or sold by Bluelab®, and shall be void if any such item is installed on a Product. Further, this warranty does not apply to replacement of items subject to normal use, wear and tear and expressly excludes:

- Cosmetic damage such as stains, scratches and dents
- Damage due to accident, improper use, negligence, neglect and careless operation or handling of Product not in accordance with Bluelab® instruction manuals, or failure to maintain or care for Product as recommended by Bluelab®
- Damage caused by use of parts not assembled/installed as per Bluelab® instructions
- Damage caused by use of parts or accessories not produced or recommended by Bluelab®
- Damage due to transportation or shipment of Product
- Product repaired or altered by parties other than Bluelab® or its authorised agents
- Product with defaced, missing or illegible serial numbers
- Products not purchased from Bluelab® or a Bluelab®-authorised distributor or reseller.

## How Do You Get Service?

To begin a warranty claim you must return the Product to the point of purchase with valid proof of purchase (as defined above). In California, you can also return the Product to any Bluelab-authorised distributor or reseller, with valid proof of purchase.

## Limitation of Liability & Acknowledgments

TO THE MAXIMUM EXTENT PERMITTED BY LAW, THIS WARRANTY AND THE REMEDIES SET OUT ABOVE ARE EXCLUSIVE AND IN LIEU OF ALL OTHER WARRANTIES, GUARANTEES AND REMEDIES (ORAL OR WRITTEN, EXPRESS OR IMPLIED).

EXCEPT AS PROVIDED IN THIS WARRANTY AND TO THE MAXIMUM EXTENT PERMITTED BY LAW, BLUELAB IS NOT RESPONSIBLE FOR SPECIAL, INCIDENTAL OR CONSEQUENTIAL LOSS OR DAMAGES, OR ANY OTHER LOSS OR DAMAGES RESULTING FROM SALE OR USE OF THE PRODUCT, OR BREACH OF WARRANTY, HOWEVER CAUSED, INCLUDING DAMAGES FOR LOST PROFITS, PERSONAL INJURY OR PROPERTY DAMAGE.

IT IS UNDERSTOOD AND AGREED BY CONSUMER UPON PURCHASE OF A PRODUCT THAT, EXCEPT AS STATED IN THIS WARRANTY, BLUELAB IS NOT MAKING AND HAS NOT MADE ANY EXPRESS OR IMPLIED WARRANTY OR OTHER REPRESENTATION REGARDING THE PRODUCT, AND DISCLAIMS ANY WARRANTY OF MERCHANTABILITY OR FITNESS FOR A PARTICULAR PURPOSE TO THE EXTENT PERMITTED BY LAW. ANY WARRANTIES WHICH ARE IMPOSED BY LAW AND CANNOT BE DISCLAIMED ARE HEREBY LIMITED IN DURATION TO THE PERIOD AND REMEDIES PROVIDED IN THIS WARRANTY.

SOME JURISDICTIONS (STATES OR COUNTRIES) DO NOT ALLOW EXCLUSION OR LIMITATION FOR INCIDENTAL OR CONSEQUENTIAL DAMAGES, OR LIMITATION ON HOW LONG AN IMPLIED WARRANTY LASTS, SO THE ABOVE LIMITATION OR EXCLUSION MAY NOT BE APPLICABLE.

IF ANY PROVISION OF THIS WARRANTY IS JUDGED TO BE ILLEGAL, INVALID OR UNENFORCEABLE, THE REMAINING PROVISIONS OF THE WARRANTY SHALL REMAIN IN FULL FORCE AND EFFECT.

## Governing Law; Authority

This warranty is governed by the laws of the state of country where Product is purchased, without regard to its choice of law principles. Except as allowed by law, Bluelab does not limit or exclude other rights a consumer may have with regard to the Product. No Bluelab distributor, employee or agent is authorised to modify, extend or otherwise change the terms of this warranty.

Register your guarantee online at [bluelab.com](http://bluelab.com)



## guarantee.

The Bluelab® Guardian Monitor Connect™ comes with a 2 year limited written guarantee. Proof of purchase required.

---



## lets talk.

If you need assistance or advice - we're here to help you.

North America Ph: **909 599 1940** NZ Ph: **+64 7 578 0849**

Fax: **+64 7 578 0847**

Email: **support@bluelab.com**

---



## get online.

Looking for specifications or technical advice?

Visit us online at **bluelab.com** or **facebook.com/getbluelab**

---



## post.

**Bluelab® Corporation Limited**

8 Whiore Avenue, Tauriko Business Estate

Tauranga 3110, New Zealand

---



Instruction Manual English MONGUACON\_V01\_210916

© Copyright 2013, all rights reserved, Bluelab® Corporation Limited