

## SAFETY INFORMATION

### OPERATION



#### Eye Exposure:

Injury may occur if eyes are subjected to prolonged, direct exposure to bright light. Wear eye protection at all times when working with grow lights.



#### Electrical Hazard:

1. Do not use if cords or plugs are damaged or electrical sockets are loose. Unsecured connections can cause electric shocks. Do not touch the power cord with wet hands or disconnect from power source by pulling on the cord, as doing so may result in an electric shock. Do not bend or damage the power cord or unit wiring, as doing so may cause electric shocks or fire.
2. When performing any troubleshooting please disconnect the AC power and wait 30 seconds for power supply to de-energize. It is also important to follow this step before any inspection, adjustment or maintenance of the fixture.



#### Burn Warning:

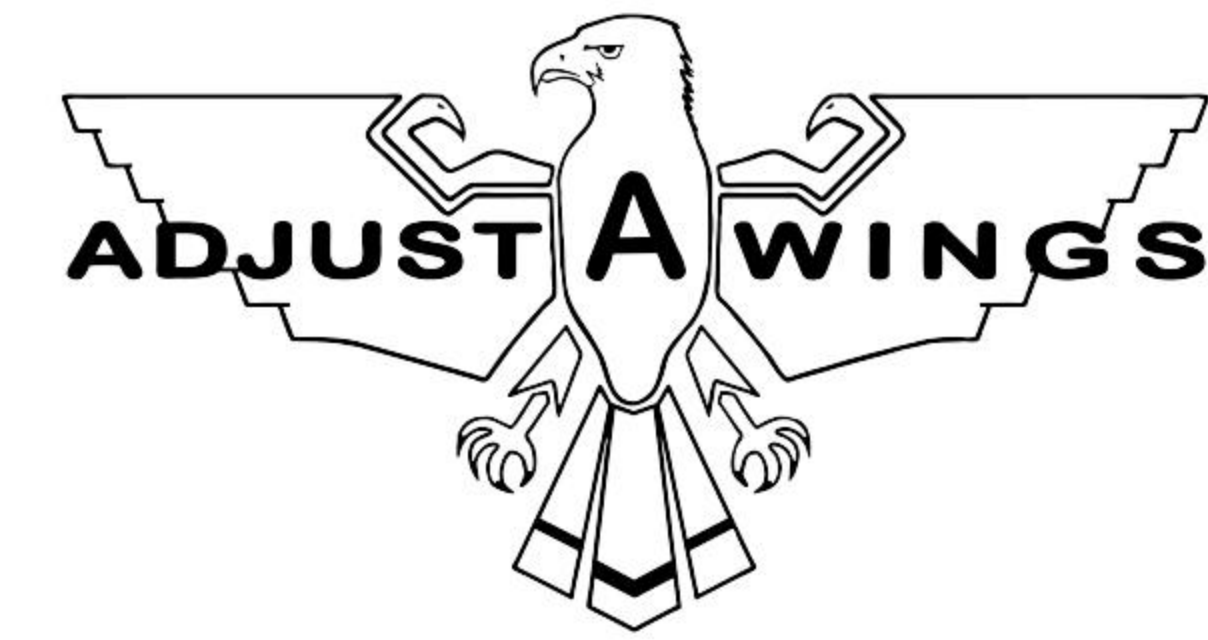
Operating lamps may become hot during use.  
Disconnect power before handling.

\*Always allow sufficient time for product to cool prior to touching.

### Caution

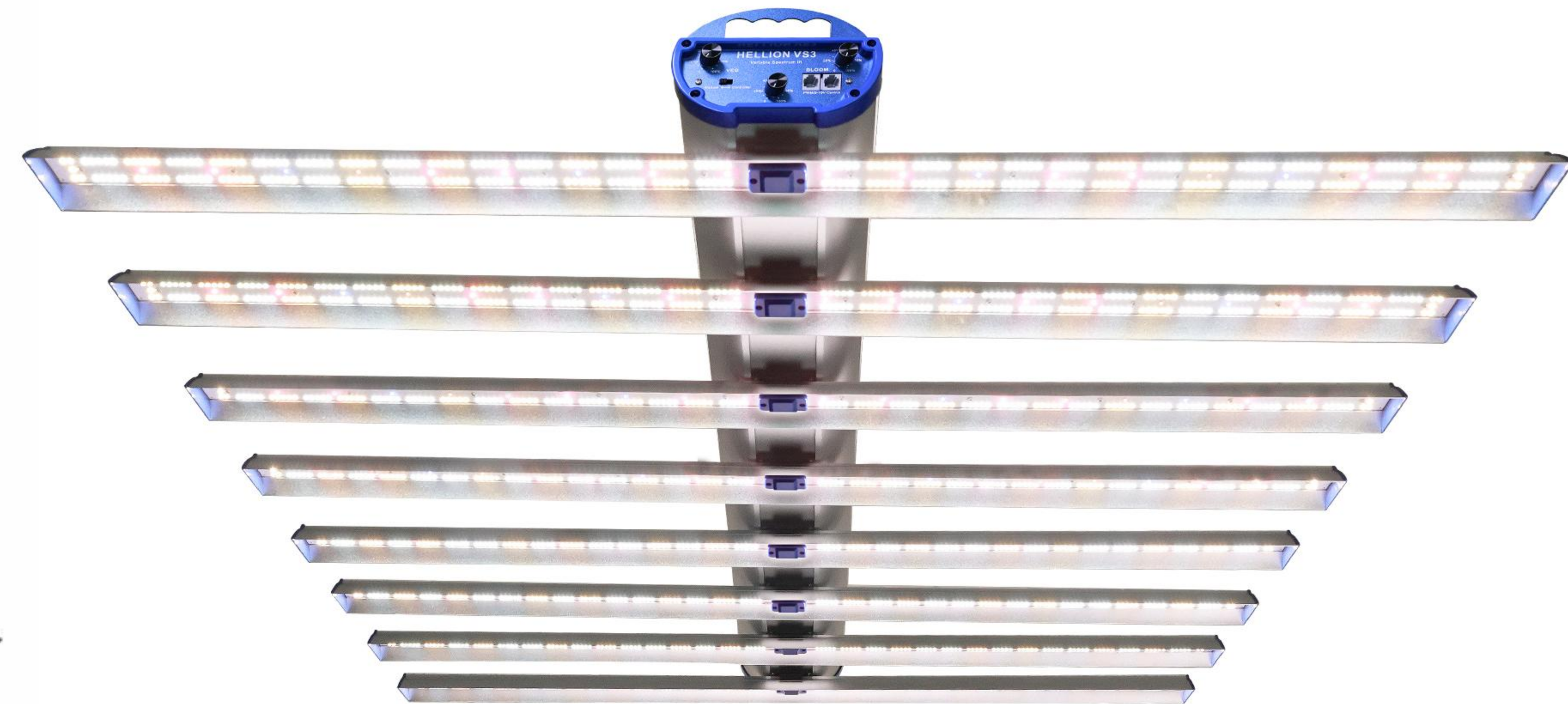
Failure to comply with safety precautions and regulations can cause injury or property damage.

- Care for and use your device properly.  
Do not use the device for anything other than its intended use.
- Damages or poor performance caused by failure to follow warnings and instructions can void your manufacturer's warranty.



# ASSEMBLY GUIDE

**HELLION Variable Spectrum III LED**



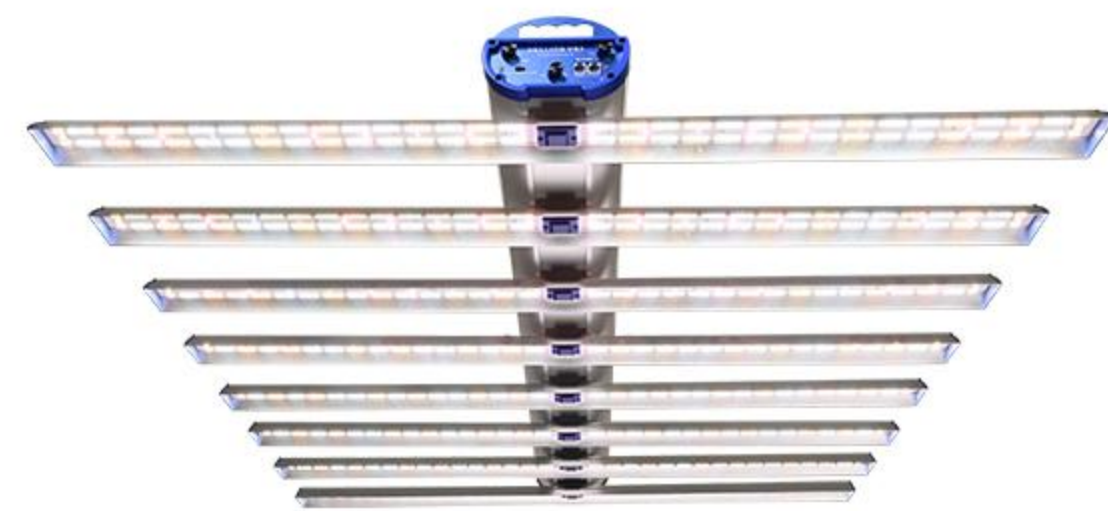
# HELLION Variable Spectrum III LED Fixtures

**500W**



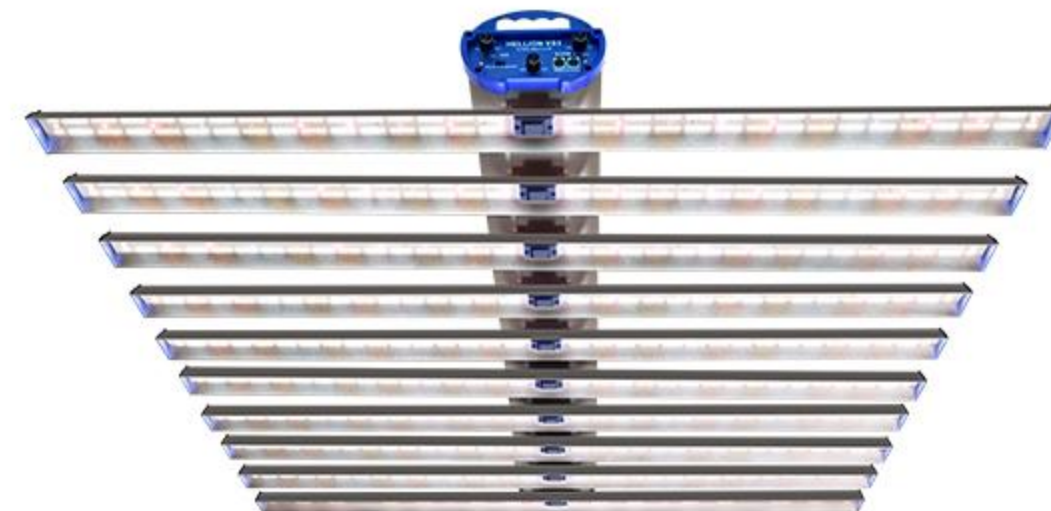
SIZE: 840\*840\*135

**700W**



SIZE: 1120\*1120\*135

**1000W**



SIZE: 1120\*1120\*135

(Unit: mm)

HELLION VS3 LEDS ARE SUPPLIED WITH APPROPRIATE POWER CORDS FOR THE COUNTRY OF SALE. ENSURE POWER CORD + LED BARS ARE FULLY SEATED INTO RECIPROCATING SOCKETS.

INPUT VOLTAGE: RANGE = 100 - 265VAC 50/60HZ, INPUT CURRENT = W / V.

WET RATING: DRIVERS = IP67, LED BARS = IP65, DRIVER HOUSING = IP40

SUITABLE FOR OPERATION IN DAMP LOCATIONS, AVOID DIRECT CONTACT WITH WATER.

COOLING: THE LED BARS COOL PASSIVELY AND SHOULD NOT EXCEED 50°C WHILE OPERATING.

AMBIENT TEMPERATURES SHOULD BE KEPT BELOW 40°C FOR SAFE OPERATION.

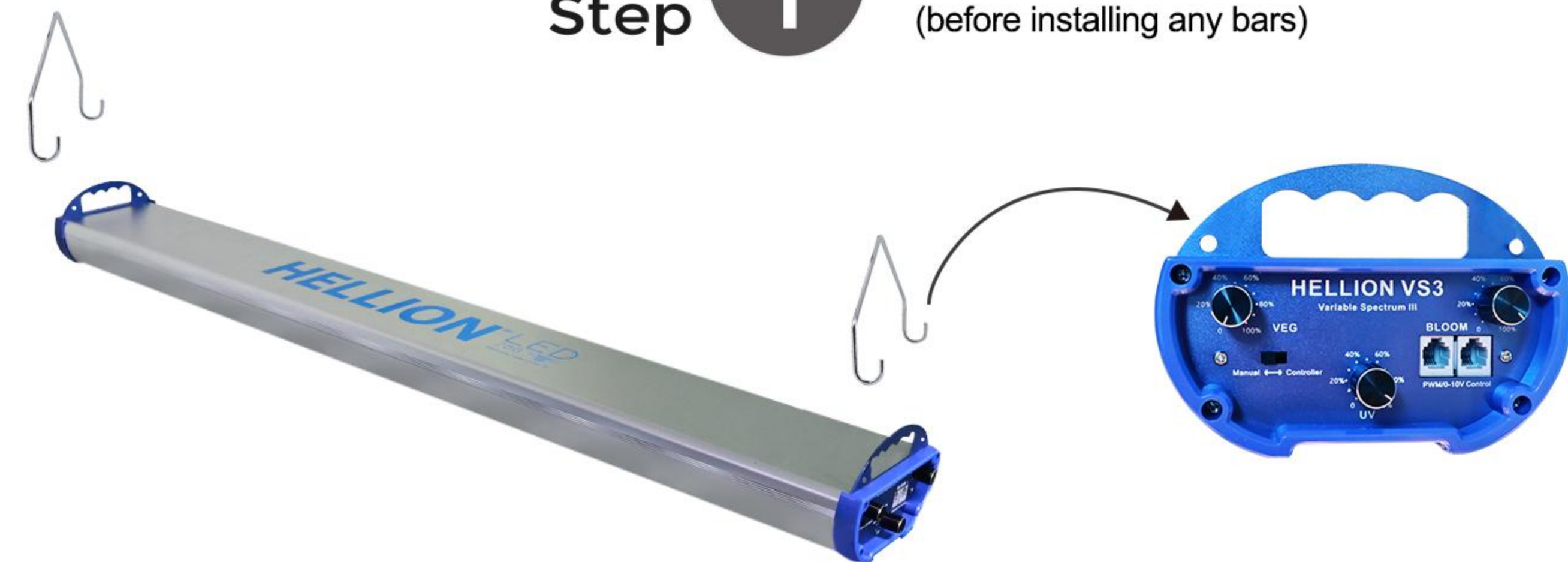
## Operating Instructions

1. Set all 3 x channels to 0% before turning on (first time).
2. Two control modes available:  
For the **MANUAL** mode: Set the toggle switch to the left  
For the **CONTROLLER** mode: Set the toggle switch to the right
3. Compatible with Hellion LED Master III Controller (or equivalent 3 x channel PWM/0-10V designs only).



# INSTALLATION STEPS

**Step 1** Lift and install the driver housing first. (before installing any bars)



**Step 2** Clip in all of the LED grow bars. Push firmly and listen for the "click" to secure each connection.



**Step 3** Connect the power cord